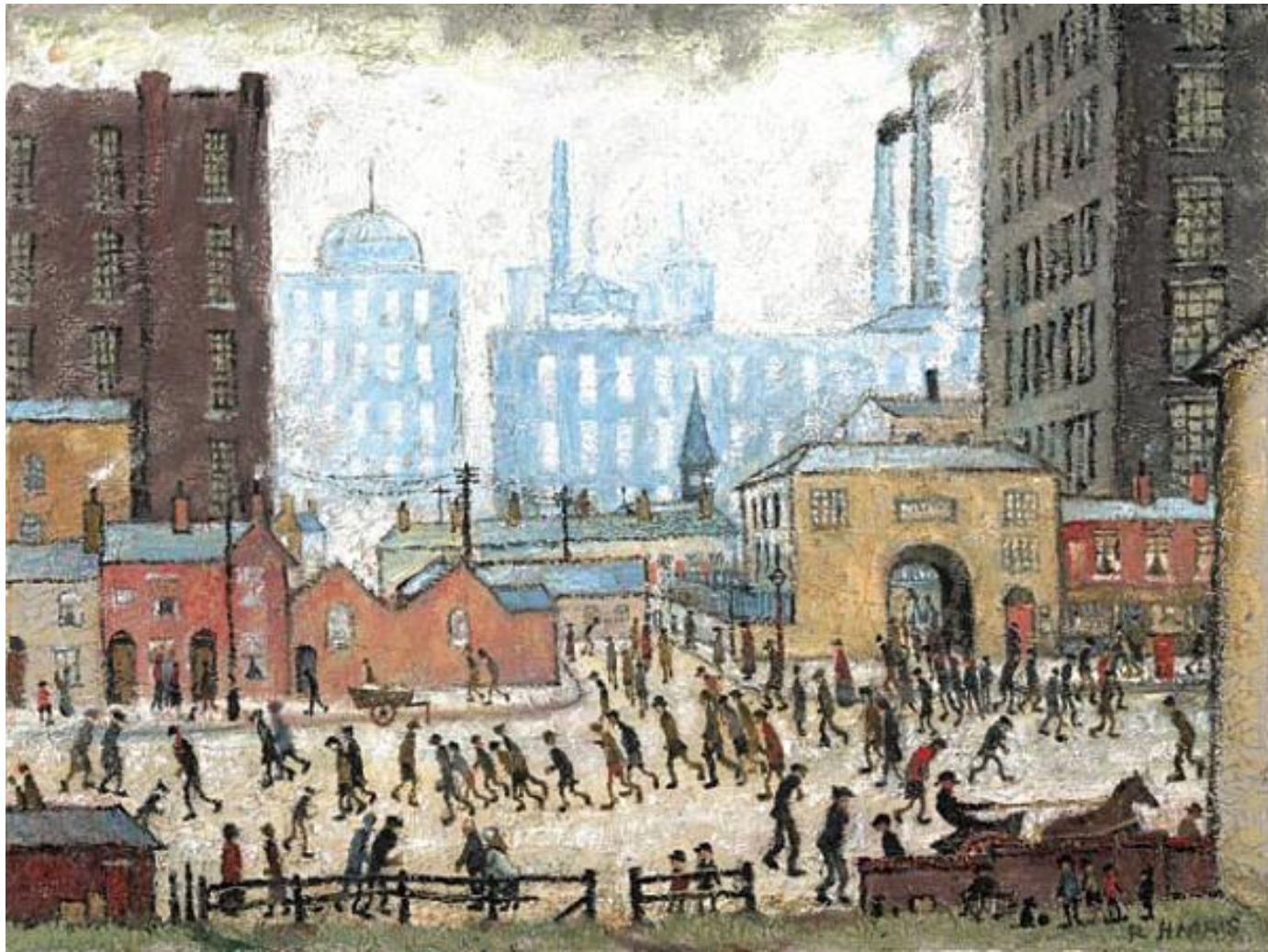


Creative Arts - Year 9 – L. S. Lowry

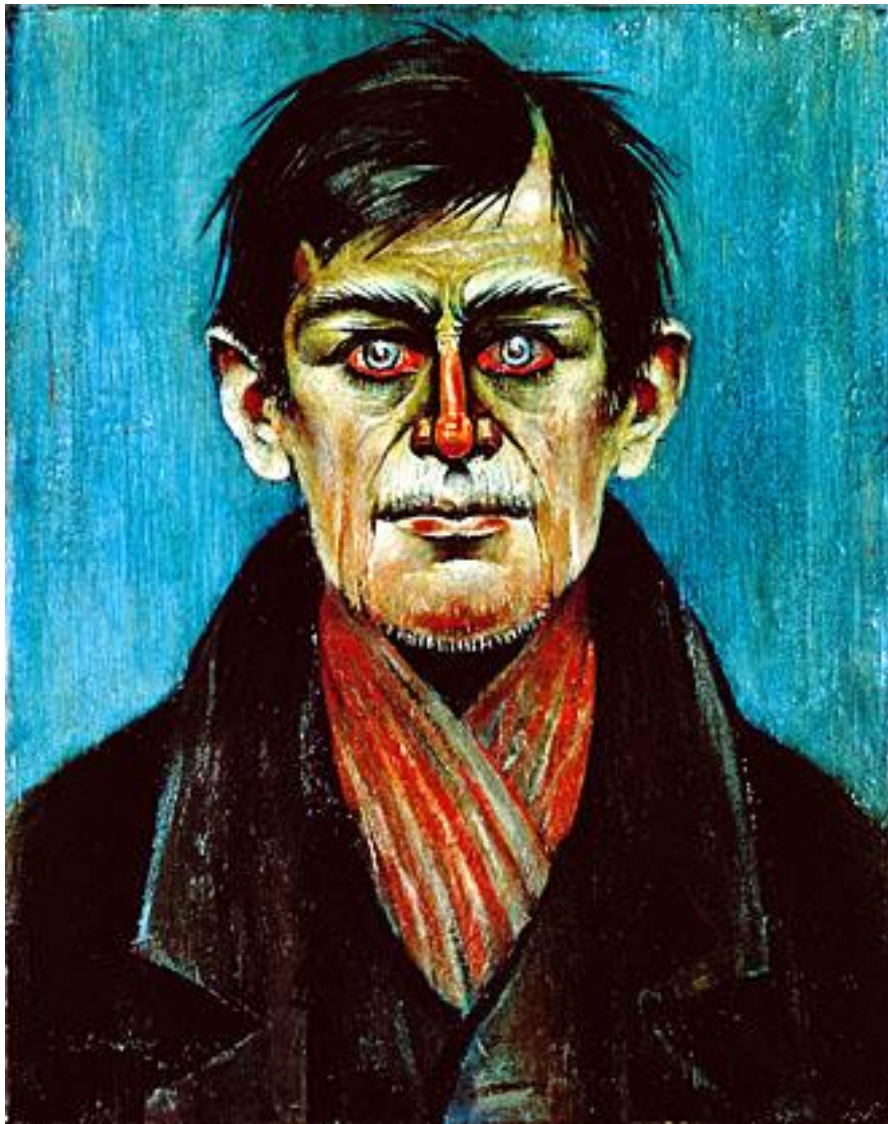
- Go through the images attached of the artists work, choose your favourite pieces and try to recreate them using a variety of materials.
- You can use pens, pencils, felt tips , pencil crayons, paints or even make a collage using different papers etc.
- You could make an unusual building like the Lowry centre or build a Lowry inspired building like his paintings.
- Try to use different mediums to show variety in your work.

Laurence Stephen Lowry (1887-1976)





Coming from the mill, 1930



***Head of a Man with
Red Eyes, 1936***



***Portrait of Ann,
1957***



***Man Lying on a Wall,
1957***



A Fight, 1935



The Pond, 1950



***The Old House, Grove Street, Salford,
1948***



The Bedroom, 1940



Yachts, 1959



Going to the Match, 1928

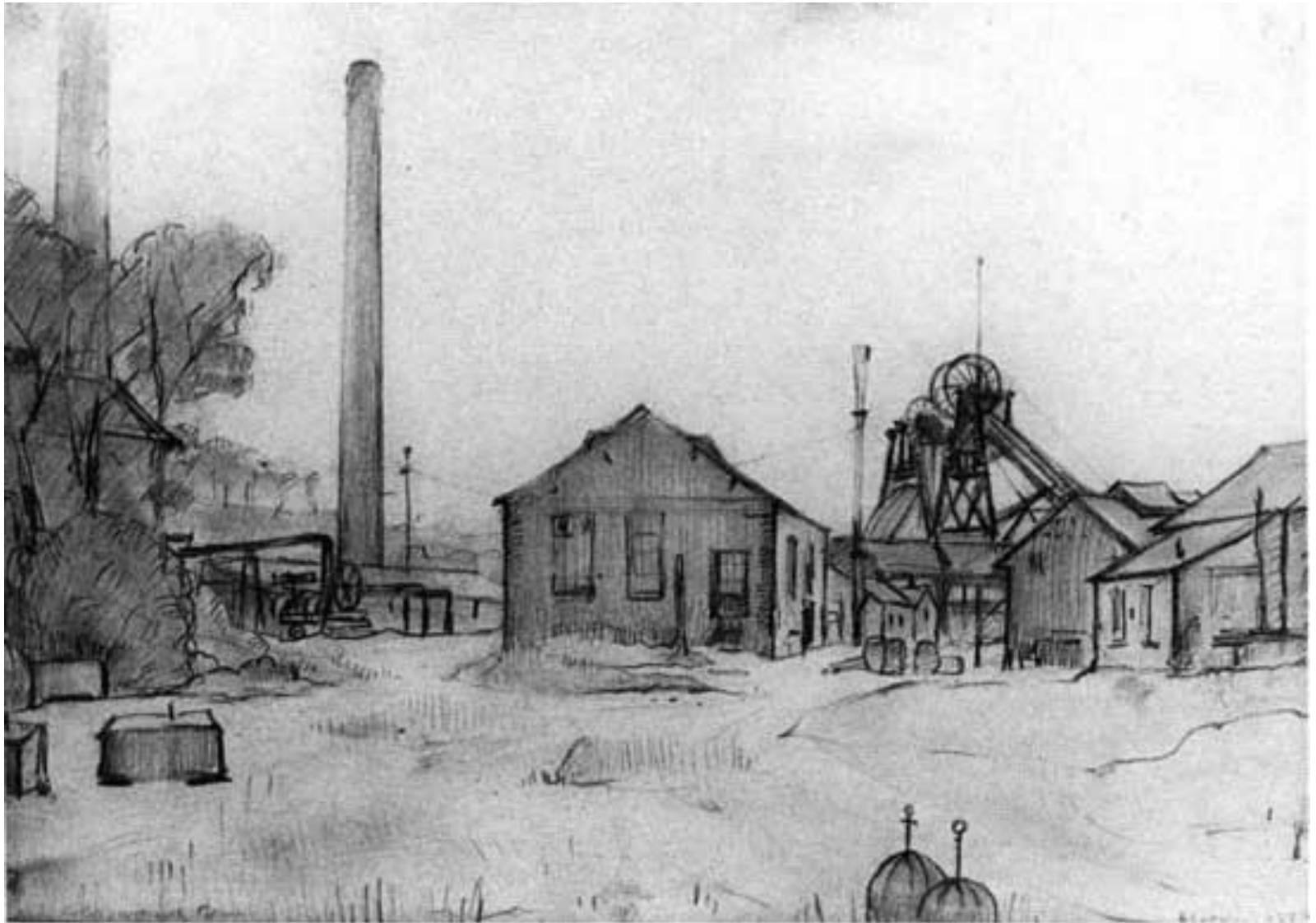
Compare & Contrast:



Hulme Place Salford

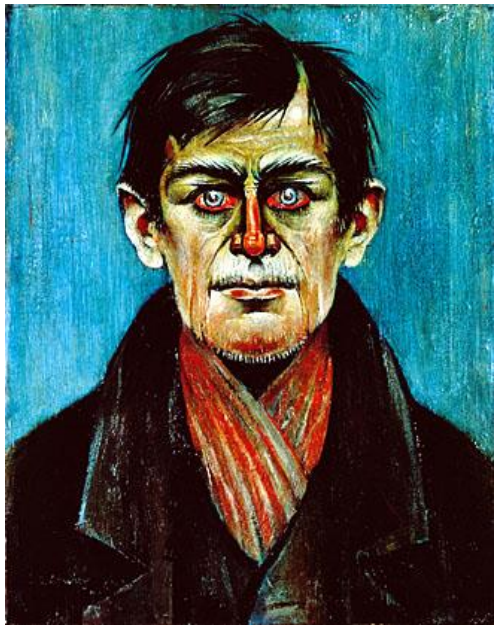


Wet Earth Colliery



Tanker Entering the Tyne





© NPG L224









